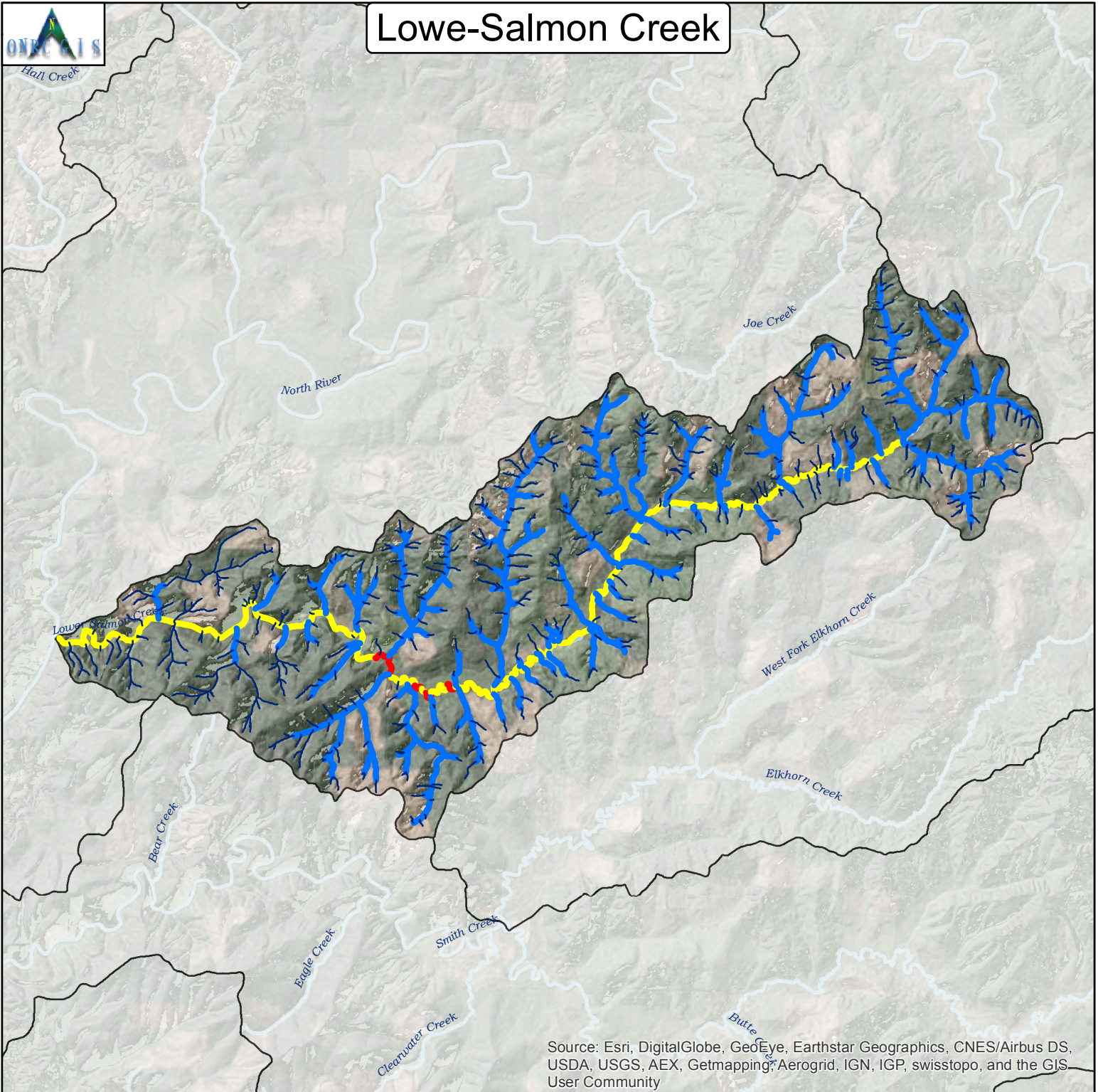
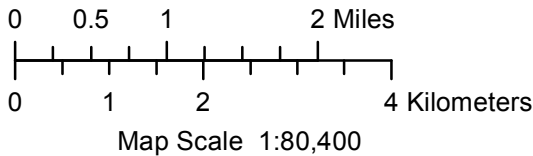




Low-Salmon Creek



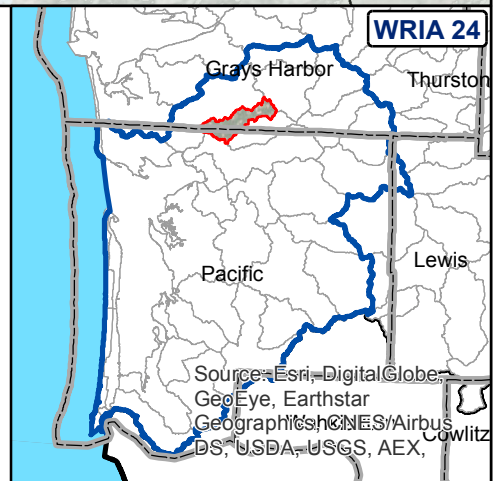
Maps By Keven Bennett
 UW | ONRC GIS
 11/18/2015



Intrinsic Potential Scoring for Steelhead Rearing Habitat

—	0	
—	> 0 to 0.35	Low
—	> 0.35 to 0.75	Medium
—	> 0.75 to 1.00	High

WSC | ONRC 2012



Projection: UTM NAD83 10N Meters
 For Detailed Documentation Go To:
http://www.onrc.washington.edu/MarinePrograms/IPOuterCoast/PostPhaseII_MapPortal.html